



splitter

ndt

THE LP1



NDT PRODUCTS LIMITED
NDTPRODUCTS.CA

LP1

NDT Products Limited is extremely excited to introduce the LP1, a new flagship product from Splitter NDT Inc. The LP1 is the ideal stand alone liquid penetrant inspection station for the low to medium volume user.

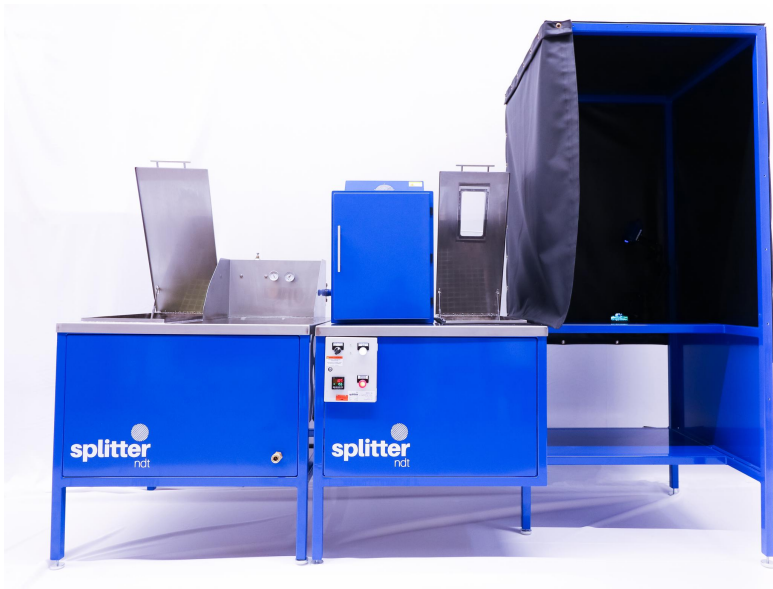
**Educational
Discounts Available**



The LP1 is well suited for aircraft maintenance facilities, non-destructive testing labs, NDT schools and training institutes, government and military facilities, and more!

This system was designed with the needs of our client in mind. Extremely durable, user friendly and cost effective, making the LP1 the new go-to system in the industry





Highlights

- All-in-one system
- Built in 2 (or 3) segments for ease of transport
- Separate wet end + dry end
- Available for all LPI methods
- Designed and built in Canada

Features

- High quality design and construction
- Built with a powder coated steel frame and stainless steel stations
- Soft close tank lids
- Full size, walk-in inspection station
- Quick connect wash station hose
- REL Inc. UV-A light included
- Dryer and developer dust chamber. Dust chamber can be replaced by a downdraft table
- System accessories included; tank lid, water gauges, UV-A Light
- Discounted start-up kits available

Bundle with our penetrant waste-water filtration system and save



Splitter NDT LP1 Specifications			
Model	LP1A	LP1B	LP1D
Number of Stations	5	6	7
Stations Included	<ul style="list-style-type: none"> ● Dip Tank (with Dwell) ● Wash Station ● Dryer ● Developer Dust Chamber* ● Inspection Booth 	<ul style="list-style-type: none"> ● Dip Tank (with Dwell) ● Emulsifier Station ● Wash Station ● Dryer ● Developer Dust Chamber* ● Inspection Booth 	<ul style="list-style-type: none"> ● Dip Tank (with Dwell) ● Pre-Rinse Station ● Emulsifier Station ● Wash Station ● Dryer ● Developer Dust Chamber* ● Inspection Booth
Number of Segments	2	2	3
Total System Dimensions	110" x 36" x 85"	135" x 36" x 85"	150" x 36" x 85"
Dimensions of Each Station	<ul style="list-style-type: none"> ● Dip Tank: 13" x 30" x 18" (15 Gal) † ● Wash Station: 20" x 30" x 18" † ● Dryer: 13" x 24" x 18" ‡ ● Developer Chamber: 13" x 30" x 18" † ● Inspection Booth: 36" x 36" x 85" 	<ul style="list-style-type: none"> ● Dip Tank: 13" x 30" x 18" (15 Gal) † ● Emulsifier Station: 13" x 30" x 18" (15 Gal) † ● Wash Station: 20" x 30" x 18" † ● Dryer: 13" x 24" x 18" ‡ ● Developer Chamber: 13" x 30" x 18" † ● Inspection Booth: 36" x 36" x 85" 	<ul style="list-style-type: none"> ● Dip Tank: 13" x 30" x 18" (15 Gal) † ● Pre-Rinse Station: 20" x 30" x 18" † ● Emulsifier Station: 13" x 30" x 18" (15 Gal) † ● Wash Station: 20" x 30" x 18" † ● Dryer: 13" x 24" x 18" ‡ ● Developer Chamber: 13" x 30" x 18" † ● Inspection Booth: 36"x36"x85"
Material	Welded steel frame with stainless steel tanks. Powder coated finish	Welded steel frame with stainless steel tanks. Powder coated finish	Welded steel frame with stainless steel tanks. Powder coated finish
Installation Requirements	<ul style="list-style-type: none"> ● 120V, 6 Amp Power ● Hot & Cold Water Service ● Clean, Dry Compressed Air, 90 PSI 	<ul style="list-style-type: none"> ● 120V, 6 Amp Power ● Hot & Cold Water Service ● Clean, Dry Compressed Air, 90 PSI 	<ul style="list-style-type: none"> ● 120V, 6 Amp Power ● Hot & Cold Water Service ● Clean, Dry Compressed Air, 90 PSI
Features and Accessories	<ul style="list-style-type: none"> ● 2 segments for easy transport ● Solid steel construction ● Stand alone inspection booth included ● Built and designed in Canada ● Soft closing lids included ● Wash station gauges and handle included ● Quick connect hose ● Premium REL Inc. UV light included 	<ul style="list-style-type: none"> ● 2 segments for easy transport ● Solid steel construction ● Stand alone inspection booth included ● Built and designed in Canada ● Soft closing lids included ● Wash station gauges and handle included ● Quick connect hose ● Premium REL Inc. UV light included 	<ul style="list-style-type: none"> ● 3 segments for easy transport ● Solid steel construction ● Stand alone inspection booth included ● Built and designed in Canada ● Soft closing lids included ● Wash station gauges and handle included ● Quick connect hose ● Premium REL Inc. UV light included

*Developer dust chamber can substituted for a downdraft table for aerosol developer

† Shelf at 10" from the bottom

‡ Shelves at 6" and 12" from the bottom

Options

Splitter NDT LP1 Start-Up Kit

Includes: Pentrant dip tank filled with Sherwin Penetrant of your choice, 15lbs of Sherwin D-90G dry developer, PSM-5 TAM Panel, monthly penetrant calibration checks for 6 months from a certified lab, dual light meter

Splitter NDT Waste Water Filtration

Nano filtration solutions for significantly reducing your cost for proper disposal of your liquid penetrant waste water. Solutions capable of up to 6000 gallons (22,712 litres) per day

REL Inc. UV Light Upgrade or Add-On

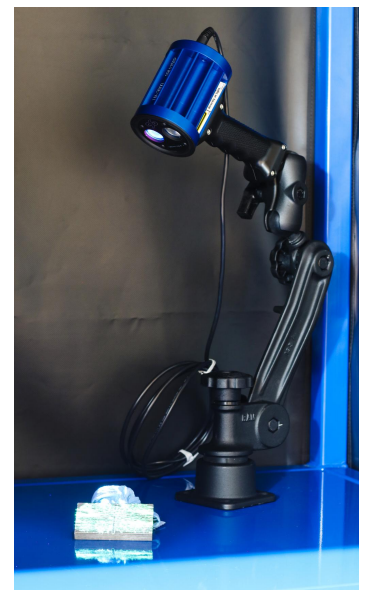
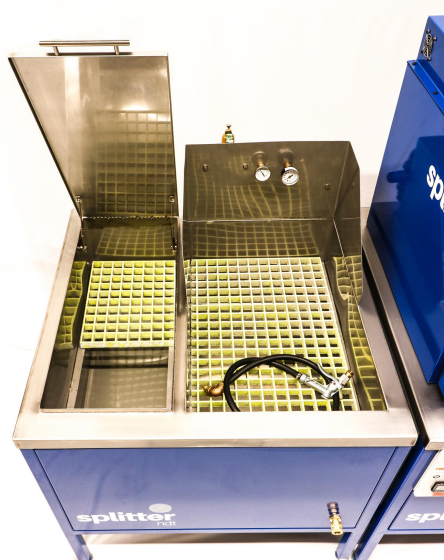
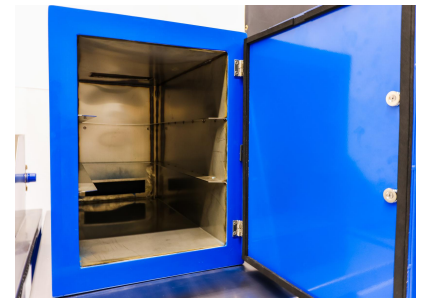
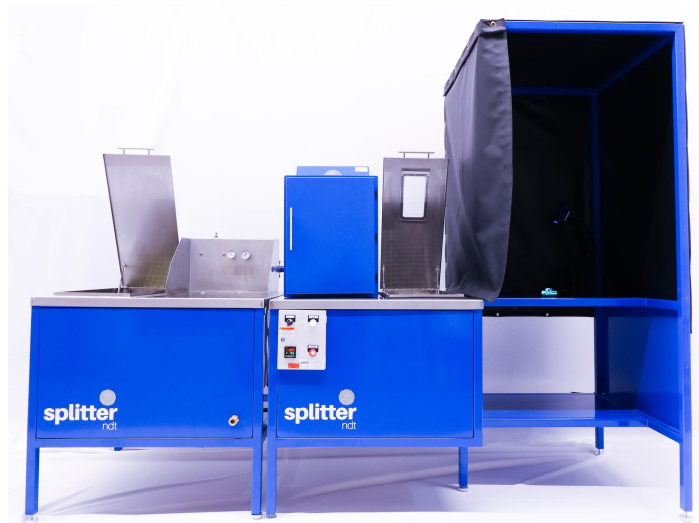
Upgrade to a battery powered REL Nomad-Go or add an REL Profusion overhead light for the wash station or inspection booth

Sherwin Inc. Penetrant Products

All liquid penetrant consumable products available. Sherwin Inc. is our liquid penetrant of choice

Customization

Do our standard systems not meet your requirements? Contact us to inquire about customization or changes





CONTACT US

Online: www.ndtproducts.ca

Email: sales@ndtproducts.ca

Phone: (905)934-5195

113-115 Cushman Road, St.

Catharines, ON Canada